



Conservation Law Foundation Environmental Justice Population Definition Methodology Vermont Environmental Justice Law Definition

Data Sources

- American Community Survey 5-Year Estimates for 2019 for the following datasets:
 - Limited English Proficient Households ([Table C16002](#))
 - Hispanic or Latino Origin by Race ([Table B03002](#))
 - Median Household Income ([Table B19013](#))
- Census Block Group shapefiles downloaded from <https://www.census.gov/geographies/mapping-files/time-series/geo/tiger-line-file.html>

Methodology

The metrics used are:

- Limited English Proficient Households as percent of total households, per block group
- People of color (total population minus “Not Hispanic or Latino: white alone”) as percent of total population, per block group
- Median household income, by block group

Our approach is to first use overall state averages for the above metrics as a starting point to determine appropriate thresholds. We then adjust and re-map the thresholds depending on which areas of the state and how much of the population would be included. At the time of this analysis, about .76 percent of households across Vermont were categorized as Limited English Proficient (LEP), and about 7 percent of the state’s population were people of color.¹ We rounded the LEP metric up to 1 percent. We used 80 percent of state median household income as the low-income threshold, which is consistent with the US Department of Housing and Urban Development (HUD) definition of low income.

Geoprocessing

ACS data tables were first downloaded, cleaned, and prepared in Excel, including calculating percentages for the above metrics. These data were then joined to the Census Block Group shapefiles. Block groups were selected using the “Select by Attributes” tool where the following is true:

- Percentage of the population that are people of color was greater than 0.06, OR
- Percentage of limited English proficient households is greater than 0.01, OR

¹ Note that due to a data error this number was initially calculated at 6 percent, which is how we ended up using that percentage in the original draft of the law.

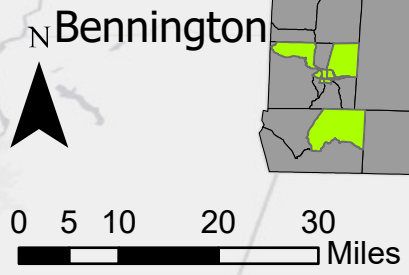
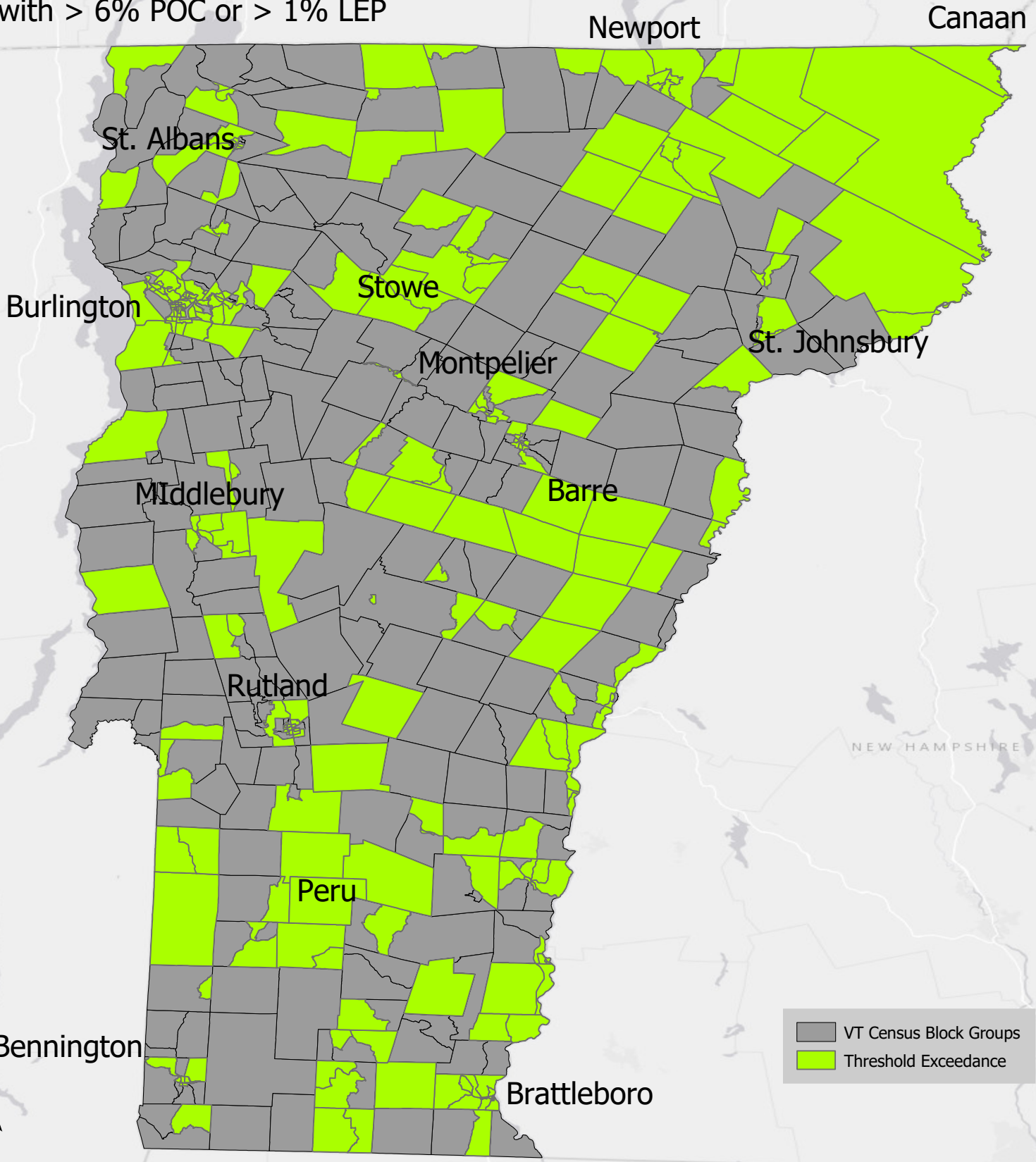


- Median household income is less than 80% of the state median household income (at the time the state median household income was \$61,973 per 2019 data, so this would select for block groups where the median household income was below \$49,578).

Block groups that meet at least one of the above criteria were included as Environmental Justice Population areas. These are then exported as their own layer for ease of use.

Vermont

Census Block Groups where Median Household Income is < 80% of the state median or with > 6% POC or > 1% LEP

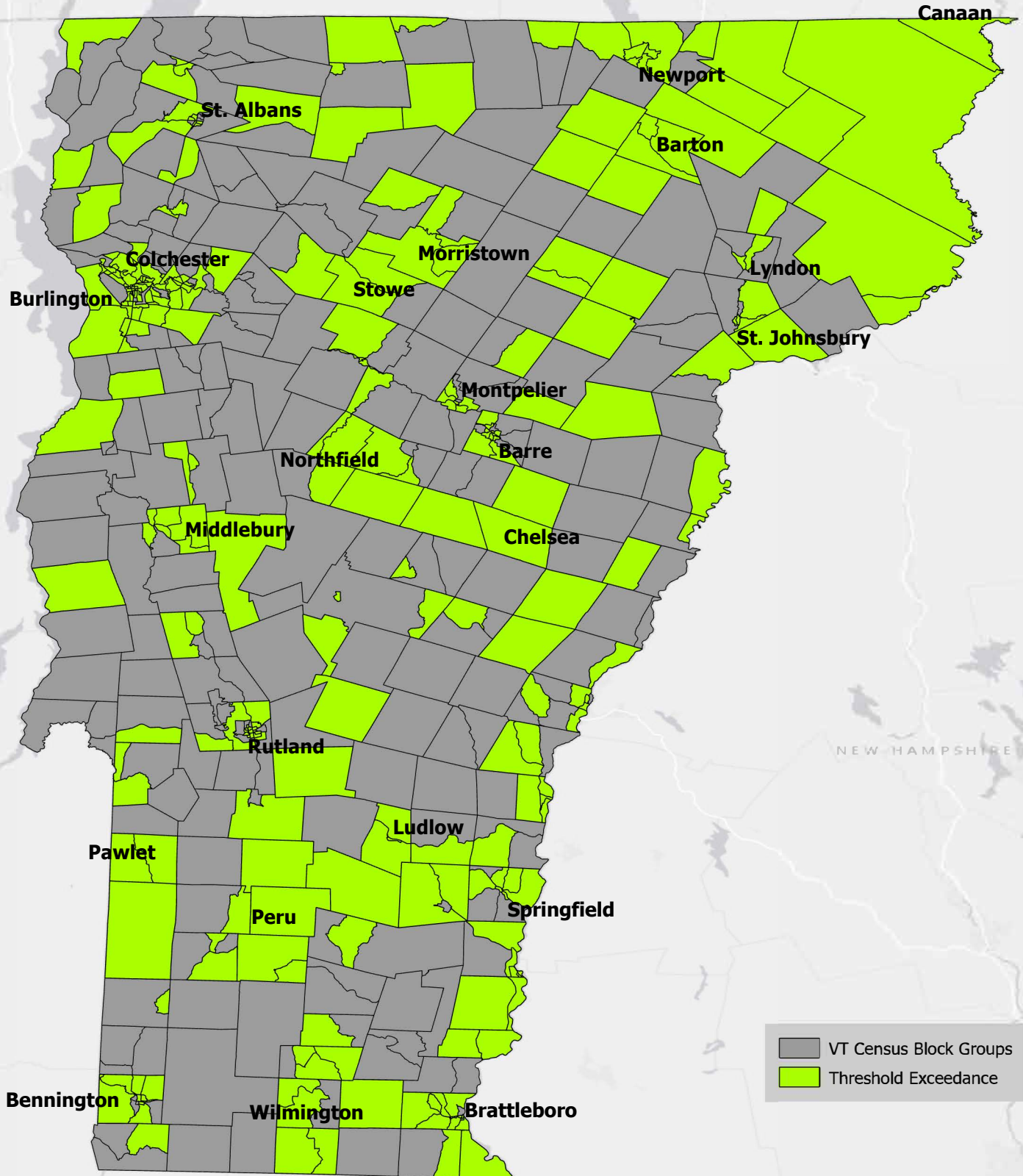


Legend:

- VT Census Block Groups (grey square)
- Threshold Exceedance (yellow square)

Vermont

Census Block Groups where the population is > 7% POC or > 1% LEP or where the Median Household Income is < 80% of the state median



NEW HAMPSHIRE

Legend:

- VT Census Block Groups
- Threshold Exceedance

Scale: 0 5 10 20 30 Miles